

Activity 06 – Manage Layers

Data Files


06.boy_jumping.psd & 06.hands.psd

Scenario

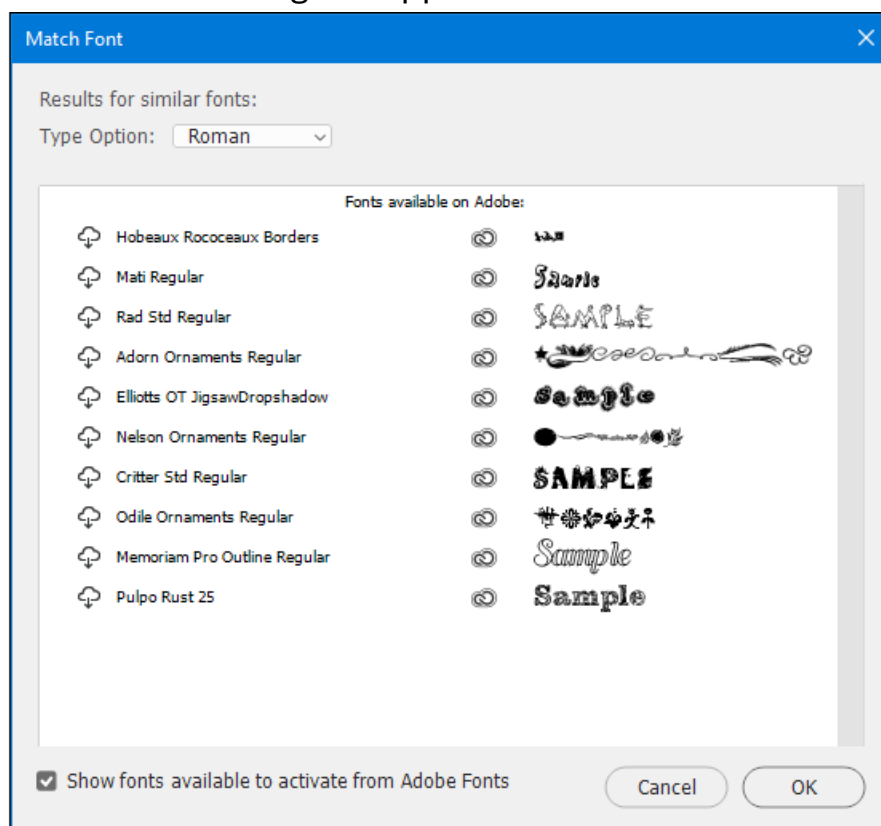
One of your co-workers is throwing a birthday party for her son. She would like to create a special invitation to send to his friends, but isn't sure how to accomplish this. She has asked you to help her. Use the following reference image as a guide during this activity.




- 1) Open the files **06.boy_jumping.psd** and **06.hands.psd**.
- 2) Tile the two files vertically by selecting **Window → Arrange → 2-up Vertical**.
- 3) Drag the image of the boy into the **06.hands.psd** file.
 - a) If necessary, make **06.boy_jumping.psd** the active file.
 - b) Select the **Move** tool and drag the image of the boy into the **hands.psd** file. Move the image as needed so that the full length of the boy is displayed vertically and is approximately centered between the painted hands. Initially, only the cursor will appear over the hands. The image of the boy will appear over the hands when you release the mouse button.

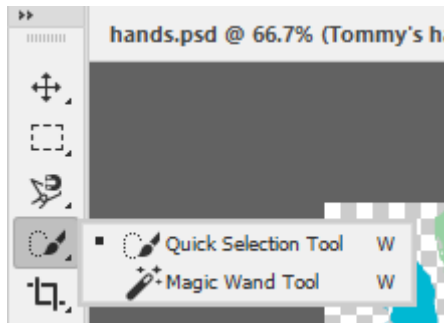
- 4) Select **Window → Arrange → Consolidate All to Tabs**. Make sure **06.hands.psd** is the active file.
- 5) Rename the layers and hide a layer.
 - a) On the right, select the **Layers** panel.
 - b) Double-click the text **06.boy_jumping**. Rename it to **Tommy**
 - c) Rename the **Hands** layer to **Tommy's hands**
 - d) Select the layer visibility button  next to the **Tommy** layer to hide the layer. Observe that **Tommy's hands** is now the active layer.
- 6) Identify a font for later use.
 - a) Make **06.boy_jumping.psd** the active tab.
 - b) Select the **Horizontal Type** tool, then select anywhere in the background and type **Tommy**
 - c) Select the **Rectangular Marquee** tool.
 - d) Draw a rectangle around the word "Tommy."
 - e) In the **Properties** panel, change the font size to **36 pt**.
 - f) Select **Type → Match Font**.

The **Match Font** dialog box appears.

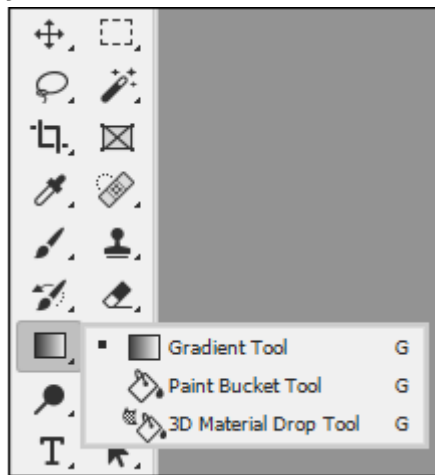


- g) Select the font you prefer.
 - h) Select **OK**.
 - i) In the **Layers** panel, with the **Tommy** text layer selected, select the **Delete** button  to delete the layer containing the word Tommy.
 - j) Select **Yes** to confirm.
- 7) Recolor the background.

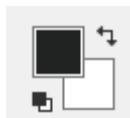
- a) Make **06.hands.psd** the active tab and **Tommy's hands** the active layer.
- b) Select the **Magic Wand** tool.



- c) On the **Options** bar, select the current **Tolerance** value and type **3** to set a tolerance of **3**.
- d) Select the transparent background. Observe the dotted line around the hands to show they're selected.
- e) On the **Tools** panel, select the **Gradient** tool, hold to display the flyout menu, and then select the **Paint Bucket** tool.

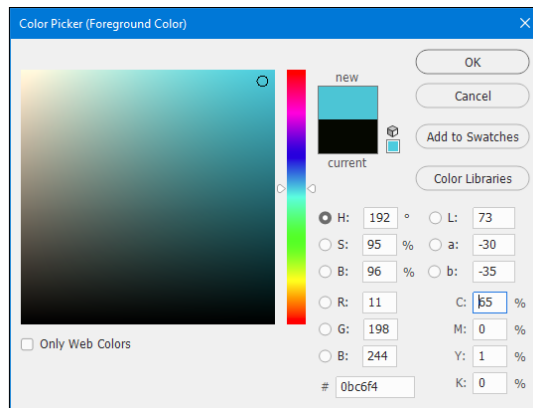


- f) On the **Tools** panel, double-click the **Set foreground color** tool



to display the **Color Picker**.

- g) In the **Color Picker (Foreground Color)** dialog box, along the **Color Slider**, select the cyan blue area. In the **Color Field** box, select a light



shade of cyan. You have to select in the big color square for the new color to show. Then select **OK**.

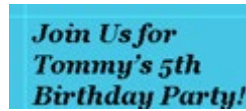
- h) Place the paint bucket cursor anywhere within the background and click to paint the background.
- i) Press **Ctrl + D** to deselect the selection.
- 8) Add text to the image.
- a) Unhide the **Tommy** layer.
- b) Select **View → Rulers** to display the rulers.
- c) If the ruler is displayed in pixels, right-click the **Ruler** and select **Inches**.
- d) Select **View → Guides → New Guide** and then select the **Horizontal** radio button. Select **OK**. The horizontal guide appears at the top of the image.
- e) Select **View → Guides → New Guide** and then select the **Vertical** radio button. Select **OK**. The vertical guide appears at the left side of the image.
- f) Select the **Move** tool. Position the guides to intersect in the upper-right area, slightly above Tommy's eyebrows and a little left of his left elbow.



- g) Select the **Horizontal Type** tool  and observe that the font family is the font you chose in the **Match Font** dialog box. Set the font size to **24**. If necessary, change the text color to black.

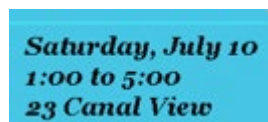


- h) Just to the lower-right of the intersection of the guides, select then type ***Join Us for*** and press **Enter**, type ***Tommy's 5th*** and press **Enter**, and type ***Birthday Party!***



If you get a message that the selected font cannot be used, select a different font, then select again and type the text.

- i) Select anywhere on the horizontal ruler and drag down to create a second horizontal guide. Drag it to the 8-inch mark on the vertical ruler.
- j) Select the **Tommy's hands** layer to make it the active layer.
- k) Select the **Horizontal Type** tool and set the text pointer in the lower-left edge of the document just below the 8-inch guide. Type ***Saturday, July 10*** and press **Enter**, type ***1:00 to 5:00*** and press **Enter**, and type ***23 Canal View***



- 9) Select any other tool (such as the **Move** tool).
- 10) Select **View → Guides → Clear Guides** to hide the guides.
- 11) Save the file to your computer as ***my_birthday_invitation.psd***